

## Questions on content until mid-November

### Sciences

When preparing the test, consider the following:

- That the test covers Unit One (Living Systems) Concept (1-1) Adaptation and Survival and Concept (1-2) How do the senses work? And the concept (1-3) light and the sense of sight to the end and the concept (1-4) communication and information transmission
- From page (5) to the end of the unit page (133)

The variety of questions in terms of level.

- That the test covers all lessons, starting from the first concept (the first unit) to the end of (the unit), with two questions for each lesson.
- That the test includes three questions, and each question contains five items in total (15 items), and the correction is done out of a total of (30 points), as follows:

Question pattern	Vocabulary number	score for each individual	Total scores
<b>First question :</b> Complete the correct answer from the brackets - or multiple choice	5	2	10
<b>Second question:</b> Put a tick (√) in front of the correct statement and (X) in front of the incorrect statement. Or connect column (A) and column (B)	5	2	10
<b>The third question:</b> * Answer the following: It includes questions with short answers such as (what do you explain, explain, explain, compare, explain with an example, state the reason, state your opinion, ....)	5	2	10
<b>Total</b>	<b>15</b>		<b>30</b>

**Question 1: Choose the correct Answer from the following: (38) Items**

1- Raise the thumb up or lower it down a kind of

- (A)- colors (B)- codes  
(C) - waves (D)- lights

Answer (B)

2- The organ responsible for the sense of sight

- (A)- the ear. (B) - the tongue.  
(C) - the nose (D) - the eye.

Answer (D).

3- One of the behavioral adaptations that help the animal protect itself from enemies

- (A) – blend in (B) - extinction  
(C) - immigration (D) - reproduction

Answer: (A)

4- The ability to turn the head in all directions ,.....

- (A) Snakes (B) jerboa  
(C) dolphins (D) owl

Answer (D)

5 -Bat is..... animal.

- (A) - nocturnal (B)- morning  
(C) - Harmful (D) - don't fly

Answer (A)

6- .....energy affects on sensory receptors in the eye, causing a vision.

- (A)-Sound (B) - Kinetic  
(C) - Light (D) – Magnetic

Answer (C).

7- All of the following are components of the nervous system except .....

- (A) Spinal cord (B) heart  
(C) nerves (D) brain

Answer (B)

8- Animals can communicate with each other through .....

- (A)- sounds and lights (B)-talk  
(C) –reading (D) - writing

Answer (A)

9- When you put your hand on a hot surface, the brain sends a message to the muscles and the action that comes from you immediately after it is to.....

- (A) Keep placing your hand (B) You feel pain  
(C) You will do nothing (D) pull your hand away from a hot object

Answer (D)

10-..... is covering body arctic fox

- (A) - heavy hair (B) - heavy skin  
(C) - thick fur (D) - many feathers

Answer (C)

11-To communicate through the sense of sight we need .....

- (A)- making sound (B)- availability of light  
(C) –hearing music (D) – touching something

Answer (B)

12-Each of the following is considered a source of light except .....

- (A)- the fire (B) - the sun  
(C) - the lamp (D) - the eye.

Answer (D)

13-The roots of palm plants help them to .....

- (A)- Stand strong against the wind      (B) – reach the underground water  
(C) - Fixation of plants in the soil      ( D) -all the above

Answer No. (D)

14-When you determine a sweet or bitter taste, you have used

.....

- (A) the tongue      (B) the eye  
(C) the ear      (D) the nose

Answer (A)

15-You could determine how high train sound by .....

- (A)- pitch of sound      (B) sound style  
(C) – sound echo      ( D) - sound style and type

Answer (A)

16 -..... panting to lower her body temperature.

- (A) Whales      (B) - Lions  
(C) -Foxes      ( D) - Bats

Answer (C)

17-Humpback whales use singing for.....

- (A)- heating      (B) - hide from enemies  
(C) – communication      ( D)- having fun with whales

Answer (C)

18- There is a tapetum lucidum in all of the following except .....

- (A) - the horse      (B) - the cat  
(C) - the human      (D) - the dog

Answer (C)

19- Your sensation of hot weather depends on sensory receptors in the

.....

- (A) eyes      (B) skin  
(C) nose      (D) eare

Answer (B)

20- The light-reflecting materials like .....

- (A) wood                      (B) - mirrors  
(C) – plastic                (D) - paper

Answer (B)

21- Adaptations include changes that .....in the environment.

- (A) reduce chances of survival    (B) reduce life span for individuals  
(C) improve species survival    (D) reduce reproduction process

Answer (C)

22- What is adaptation?  
.....

- (A) The process by which new species appear.  
(B) Feature owned by living things to help them survive.  
(C) A form of pollination for trees.  
(D) A process of getting rid of harmful substances in living things.

Answer (B)

23- What happens to living things that can't adapt to the conditions of its environment

- (A) their number increases            (B) they can't stay in the environment  
(C) keep their number constant    (D) they can survive in the environment

Answer (B)

23- Animals that live in a hot environment have ..... ears to help her, and allow heat to escape to be cool.

- (A)- small                                      (B) - short  
(C)- long                                        (D) - sharp

Answer (C)

24- Sameh drives his bike and while that he hears a car behind him, he turns away so as not to hit it. The system that received a signal made Sameh realize that is .....

- (A) the nervous system      (B) the respiratory system  
(C) the digestive system      (D) the circulatory system

Answer (A)

25- Which of the following allows pass the light through it?  
.....

- (A) - a rock      (B) - moon  
(C) - wood      (D) - glass

Answer (D)

26- What feature of light helps you see yourself in the mirror?  
.....

- (A) - refraction      (B) - ray length  
(C) - short rays      (D) - reflection

Answer (D)

27- Surface that regularly reflects light .....

- (A) - smooth and shiny      (B) - dark with impurities  
(C) - transparent and clean      (D) - rough and dark

Answer (A)

28- Which of the following is a source of light?  
.....

- (A)– Eye      (B) - The moon  
(C) - Fire      (D) - Mirror

Answer (C)

29 – what carries the message from your eyes to your brain when you see something...

- (A) - nerves      (B) - muscle

(C)- veins ( D)- glands

Answer (A)

30- Animals can communicate with each other by.....

- (A) talking (B) Writing.  
(C) the Sound (D) reading.

Answer (C)

31- Adel wanted to make a suitable box through which he could see what was inside without having to open it. What material should be used?

.....

- (A) Wood (B) Mirror.  
(C) carton. (D) transparent plastic.

Answer (D)

32- Fish extracts oxygen out of the water by .....

- (A) skin (B)-gills  
(C)- lungs (D) fins

Answer (B)

33- Stomach is a part of the digestive system that .....

- (A)-chewing food. (B) - converts solid food into liquid  
(C)- absorbs nutrients from food. (D) delivers food into the esophagus.

Answer (B)

34- Which of these examples of hid or a camouflage?

.....

- (A) - Camel broad feet. (B) - Camel hump.  
(C)- Powerful parrot wings. (D) - the fox is golden like its environment.

Answer (D)

35- When light falls on a dark surface

.....

- (A) - the surface absorbs the light. (B) - light passes through it.  
(C) - the light is refracted. (D)- Nothing happens.

Answer (A)

36- Our eyes help us see what's around us. What is the organ responsible for perceiving what we see with our eyes? .....

- (A)- The lungs; (B) – The esophagus.  
(C) - The stomach. (D)- The brain

Answer (D)

37- Eagle is bird of prey (who eats meat). Its beak is strong and sharp. This structural adaptation helps it to .....

- (A) - see. (B) - ripping meat;  
(C) - find a shelter. ( D)- escape.

Answer (B)

38-The .....system helping us to translate messages that come from our surroundings, such as smells and sounds.

- (A) - respiratory (B) - digestive  
(C) - nervous (D) - circulatory

Answer (C)

**The second question: Put a sign (√) or a sign (X) or the following statements: (37) Items**

- 1- The ear is the sense organ responsible for seeing objects. ( ) answer (×)  
2- The brain responsible for processing information ( )  
answer (√)  
3- Foxes have a strong sense of hearing. ( ) Answer (√)  
3- In order for the code to be translated, the brain must identify it ( )



answer (√)

5- The moon is a source of light. ( ) Answer (×)

6- The respiratory system is responsible for the entry of air into the body.  
Answer (√)

7- Bats use their sense of smell to avoid dangers. ( ) Answer (×)

8- Dolphins have a strong sense of sight. ( ) Answer (×)

9- Languages have not changed over different times. ( ) Answer (×)

10- Exhaled air is loaded with oxygen. ( ) Answer (×)

11- Snakes have the ability to rotate their heads in all directions. ( )

Answer (×)

12- When running and making an effort, the number of breathing times decreases. ( ) Answer (×)

13- Red and green traffic lights are codes ( ) Answer (√)

14- Both humans and animals need a source of light to see ( )

Answer (√)

15- A person can identify food which is not good through the sense of hearing. ( ) Answer (×)

16- Wood is a transparent object that allows light to pass through it. ( )

Answer (×)

17- Nocturnal animals have eyes that are larger than the human eye. ( )

Answer (√)

18- Acacia trees grow in the Amazon forest. ( ) Answer (×)

19- Some animals can see at night, such as a wild cat ( ) . Answer (√)

20- Animals can use more than one sense to communicate with each other ( ) . Answer (√)

21- The feet of the penguin do not freeze because they have a layer of fat.

( ) Answer (×)

22- The fur that some animals possess to protect them from the cold is a behavioral adaptation. ( ) Answer (×)

23- Man cannot restore the ecosystem with any way ( )

Answer (×)

24- The brain translates the code that it cannot identify it ( ) Answer (×)

25- The migration of birds to search for food is considered a form of behavioral adaptation. ( ) Answer (√)

26- Human has a tapetum lucidum in his eye to help him see at night ( )  
Answer (×)

27- Some animals that live in cold have a long ears; To help it to maintain the body temperature ( )

Answer (×)

28- Bees can know the sweet taste by their sense of smell ( ).

Answer (×)

29- Plants need long roots that extend deep into the soil to survive in the water scarce ( ).

Answer (√)

30- Animals digging trenches is a form of structural adaptation ( ). .

Answer (×)

31- Food turns from complex to simple during digestion ( ).

Answer (√)

32- The nervous system works separately from the five senses. ( ).

Answer (×)

33- Seeing with our eyes is a way to help us gather information about the environment around us. ( ). Answer (√)

34- If I can see my face clearly on a surface, this means that it is a smooth, shiny surface. ( ). Answer (√)

35- When you use the television, you have used a part of the answer communication system ( ). Answer (√)

36- The skin is the sensory organ that makes you feel the smooth of the cloth ( ). Answer (√)

37- Plants have two types of adaptation (structural and behavioral) ( ). Answer (√)

**The third question: Match column (B) to column (A) (25) Items**

1)

Column (B)	Column (A)
a-it depends on the body's sense of heat for predation	1-light
b-it depends on the echo of the sound in locating the prey.	2-owl
c-An animal with a bowl- like face and strong senses of hearing and vision.	3-the snake
d-it is the visible form of energy that is transmitted in the form of waves.	4-the bat
e-A structural adaptation in the eye that provides some animals with better vision at night.	5-mirror- like membrane
f- A sense that helps us hear birds.	

Answers: 1 with d // 2 with c // 3 with a// 4 with b // 5 with e

2)

Column (A )	Column (B)
1-It is similar in its processing of information to a computer.	a- The spinal cord
2-when a foreign object is brought into your eyes	b- Using the sense of sight
3-when an object falls from your hands.	c- The brain
4-the transmission of commands to the muscles to contract.	d- The reflex action occurs

Answers: 1 with c // 2 with d // 3 with b// 4 with a

3)

Column (A )	Column (B)
1-is a common organ in the digestive and respiratory system. 2-a gas necessary for respiration. 3-the process of pushing air in and out of the body. 4-a muscle that has an important role in the breathing process. Is a gas produced by respiration.	a- Carbon dioxide b- respiration of c- diaphragm d- throat( pharynx) e- oxygen

Answers: 1 with d // 2 with e // 3 with b// 4 with c//5 with a.

4)

Column (A )	Column (B)
a-it does not absorb food. b-a type of adaptation that helps an animal to hide. c-ants use it to sense and communicate smells d-it helps us see e – a muscle that plays an important role in breathing	1-sight 2-camouflage 3-esophagus 4- diaphragm 5-smell

Answers: 1 with d // 2 with b // 3 with a// 4 with e//5 with c.

5)

Column (B )	Column (A)
a- bronchioles b- carry messages to the brain via the spinal cord. c- The kapok tree emits beautiful scents to attract bats d- Structural adaptation of some animals to see better at night. e- A way to communicate between some animals	1-nerves 2-branches inside the lung that resemble tree branches 3-behavioral adaptation 4-vibrating motion

	5- mirror- like membrane
--	-----------------------------

Answers: 1 with b // 2 with a // 3 with c// 4 with e//5 with d.

Complete the following sentences from the two brackets (32 Items)

1 – From the opaque objects .....

(Carton – Glass)

2 – From the organs that we can use to send or receive the code.....

(Eye - Heart)

3- The time taken for the body to receive information from the environment.....

(Reflex action - **Rresponse time**)

4- Bees and humans are similar in communication through .....

(Sounds - **movements**)

5- An animal that can escape from enemies because of the length of its hind leg.

(Arctic fox - **jerboa**)

6- The eye sends messages to ..... through the nerves

(**Brain** - spinal cord)

7- The fat layer under the animal's skin to warm it is an ..... adaptation

(Structural - behavioral)

8- Cats' eyes are adapted to night vision due to the presence of .....behind their eyes.

(Tapetum lucidum - wide eyes)

9- The dolphin can locate its prey through its sense.....

(hearing - sight)

10- Bats use ..... as a means of communication with each other.

(Sound - light)

11- It causes many problems for the lungs .....

(Breathing - pollution)

12- Fish breathe ..... gas which dissolved in water

(Oxygen - carbon dioxide)

13- The different languages are considered as .....(Codes - Lights)

14- When light falls on an object and the light....., we can see this object.

(refracts - reflects)

15- ..... mix and grind food inside the mouth

(Teeth only - Teeth and tongue)

16- When light is reflected off a surface in different directions, that surface is.....

(Smooth - Rough)

17- The echo sound feature depends on

(Hearing sense - Sight sense)

18- Mangroves trees grow in.....(Fresh water - salt water)

19- Humpback whales communicate with each other through a sense...

(Hearing - sight)

20- Examples of objects that allow light to pass through. ....(Lens - paper)

21- During exhalation,..... gas comes out of the lung.

(Oxygen - Carbon dioxide)

22- The skin is an important organ of the system...

(Respiratory - Nervous)

23- The lungs are one of the important organs in the .....system.

(Respiratory - Digestive)

24- The spinal cord is an important organ of the .....system

(Nervous - Digestive)

25- Which of the following is not used to transmit information by code or pattern.

(Write a letter - lightning light)

26- Sensory organs such as the nose and ear receive information from the surrounding environment and convert it to ..... (Nutrients - Nerve signals)

27- The diaphragm rises up during the ..... operation

(Inhalation - Exhalation)

٢٨- In order for the human being to remain alive, there is an integration between the senses and the .....system to interact with the surrounding environment .

(Respiratory - Nervous)

٢٩- The cactus plant has spines that protect it from being eaten by desert animals, and this is considered a form of .....

(Behavioral Adaptation - Structural Adaptation)

٣٠- When light is obscured by an opaque object, ..... is formed.

(Tapetum lucidum - **Shadow**)

3١- Traffic lights depend on the sense of sight in communication like

.....

(**fireflies** - dolphine)

3٢- A tube with muscles that help push food into the stomach, called.....

(Trachea - **Esophagus**)

**The fifth question: Answer the following: (22 items)**

1- A dolphin can locate living organisms and things under the surface of the water and explain the feature that helps the dolphin to do so

.....

Answer (echolocation)

2- There are some nocturnal animals that depend on their sense of heat to get their prey .....

Answer: (Example of a snake)

3- Many communication systems, select one example of these examples that a person uses to communicate .....

.....

The answer (the mobile phone - or any answer related to the communication systems that the learner answers is considered correct)

4- Mention the reason why bees communicate in a distinct way similar to the way humans use facial expressions. ....

The answer (because she can communicate with movements)

5- The code can be expressed by using some patterns Give one example

The answer (letters, numbers, or colours.....)



6- Butterflies that have a color like the color of the tree they live on are called this phenomenon Answer (disguise) 7- Some animals have the ability to see in the dark because of .....

.....

The answer (the transparent rug)

7- Rabbits have long and strong hind legs that help them to jump quickly and escape when danger determine the type of adaptation

.....

.....

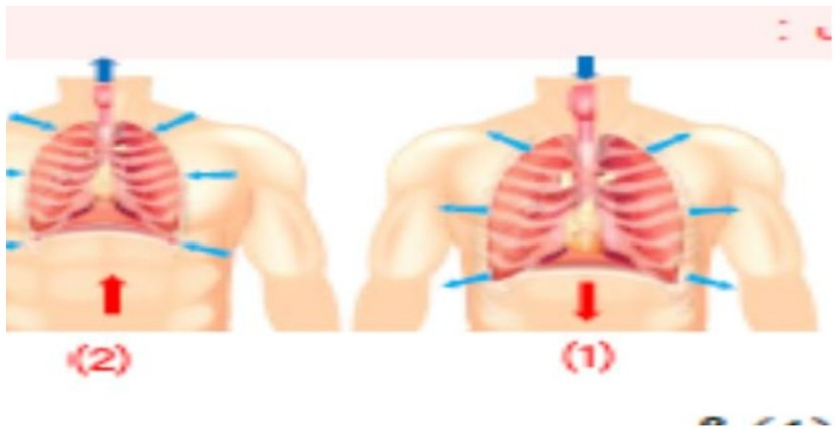
The answer (combined adaptation)

8- Snakes depend on identifying their prey and catching them at night by sensing heat. Determine the reason .....

.....

The answer (as it is not seen at night)

9 - Note the following two figures. Identify the name of each of the two processes in Figures 1, 2: -



Answer (Process 1- Inhale) (Process 2- Exhale)

What happens to the diaphragm in Figure (1).

answer (contract)

10- Your friend wanted to prevent the light from entering his room. Suggest him some materials that he can use on the window to prevent the light from entering the room.....

Answer: (cardboard, wood or thick plastic, ....)

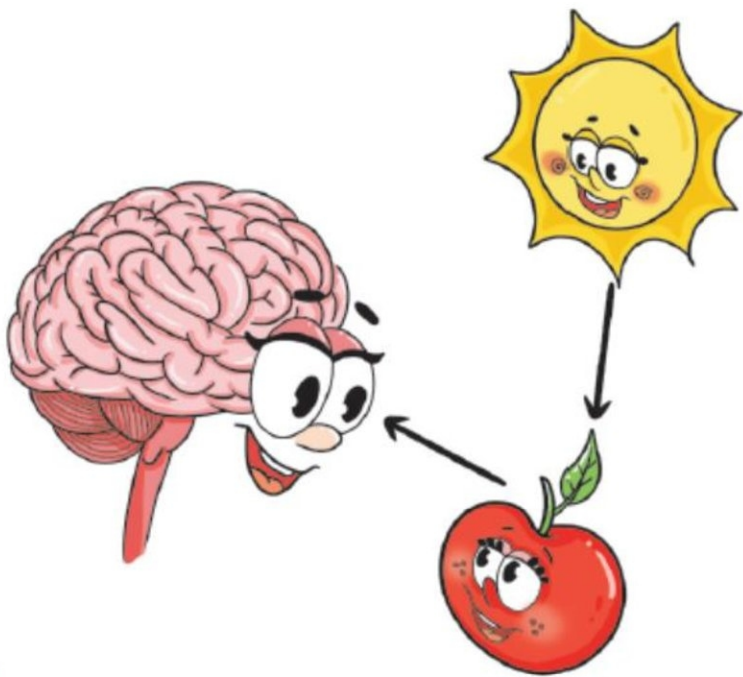
11- Complete with the appropriate words

(Respiratory system - lung - stomach - digestive system - trachea - touch - hearing - heart - ear - eye)

The system that digests food to produce energy is

.....  
.....

12- Complete after noticing the following figure - What happens until you



see this apple? •

13-The light falls on the ..... then it is reflected on the eyes - so the eyes transmit the message to..... then he interprets it and translates it, so we see the apple. Answer (the apple - the brain) 14- Bats cannot see in the dark, but they hunt their prey at night because of

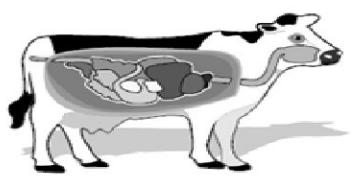
.....  
.....

Answer: (Because bats rely on their superior sense of hearing, they locate echoes

14-Chameleons can move each of their eyes in a different direction, this adaptation helps them in .....

The answer (Synthetic adaptation - help it catch its prey and avoid predation by another animal)

15- In front of you the digestive system of a herbivore, explain one of the



features of the ..... digestive system of herbivores.

The answer (it has a four-chambered stomach and a long digestive channel)

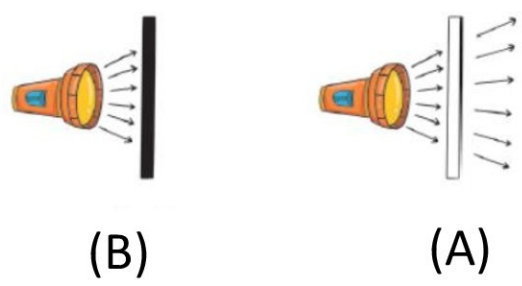
16- some dogs live in a cold environment, while some live in a hot environment. In your opinion, which one has thick fur, the cold environment or the hot environment? And why? .....

Answer (cold environment - to warm it)

17- Leaves of plants that float above the surface of the water are so wide that they can: .....

Answer (sunlight absorption)

18- Look at the path of the light rays in pictures (A) - (B). Determine which of the two objects is opaque and which is transparent ( **object** ) (A) .....  
( **object** ) (B) .....



Answer (object A is transparent object B is opaque) 20- I saw an eye shining in the dark, this animal could be..... answer (cat)

19- Compare the shape of the teeth of cows and dogs to match the type of food. Cow's teeth ..... where they feed on ..... . Dogs' teeth ..... where they feed on ..... The answer (cow's teeth are flat - grass) (dog teeth are sharp - meat)

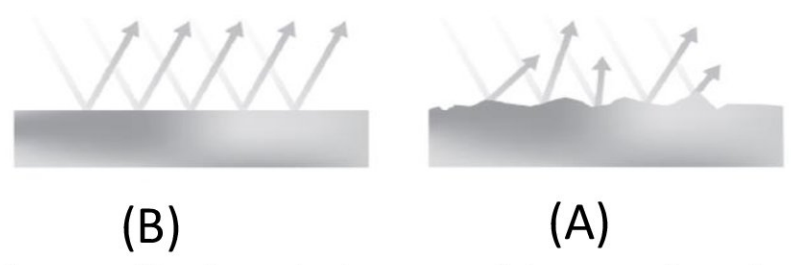
20- You cannot explain writing in hieroglyphs even though you see it well .....

The answer (Your brain must already know the code pattern of the hieroglyphic language - so that the brain can translate and understand it)

23- Animals that have a thick layer of fat under the skin are animals that live in an environment .....

. answer (cold)

21- Which of the following surfaces represents the reflection of light rays from a wooden spoon - and what is the reason?



Answer (Surface A - because it is a rough surface)

22- A common means of communication between humans and some animals.....

The answer is (movements)